



Jess

From proteinSimple™
Part of Bio-Techne

AUTOMATED CAPILLARY WESTERN BLOT

Unil.
Protein
Analysis
Facility

WIDE SEPARATION RANGE

From 2 to 640 kDa.

FLEXIBILITY

12 or 24 independent samples.

RELIABILITY

CV <10% (intra-run), <20% (inter-run).

LIMITED

Only 3 µl sample per capillary.

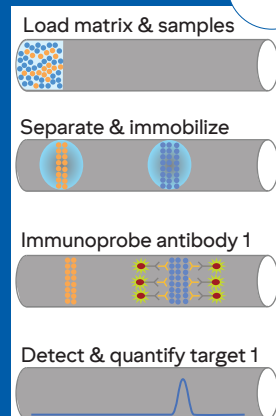
SPEED

72 samples in 24h.

2 POSSIBLE RUNS

Regular

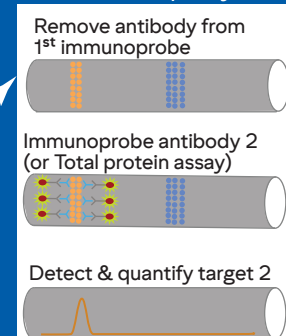
3h



RePlex

5h30

A second run can be done in the same capillary.

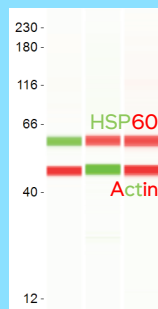


Adapted from ProteinSimple

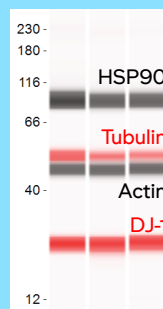
2 DETECTION MODES FOR MULTIPLEXING



Chemiluminescence



Fluorescence

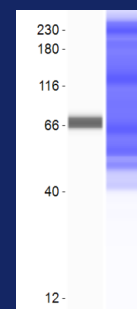
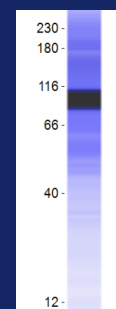


Fluorescence +
Chemiluminescence

TOTAL PROTEIN NORMALISATION

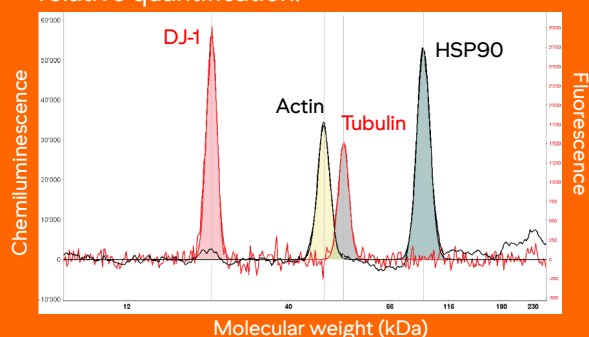
Data can be normalized to total proteins, which is more reliable than housekeeping proteins.

Total proteins are detected either with the antibodies (left) or in a RePlex 2nd step (right).



ACCURATE QUANTIFICATION

Area Under the Curve is measured for relative quantification.



New to western blotting?

Working with tiny sample volumes?

Dreaming of reliable quantitative data?

THEN JESS IS FOR YOU

Contact

Protein Analysis Facility
Genopode Building
University of Lausanne
+41 692.39.48
severine.lorrain@unil.ch