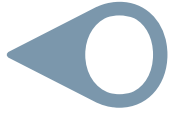


◀ QUEST
LAUSANNOIS



Healthy Urban Systems

CIVIS HUS Workshop, UNIL

Benoît Biéler

Directeur du bureau SDOL

Stratégie et développement de l'Ouest lausannois (SDOL)





M. Emery, Edit., Bussigny No. 578.

Bussigny. Quartier de la Gare.

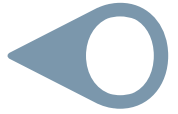












8 communes - 1 district

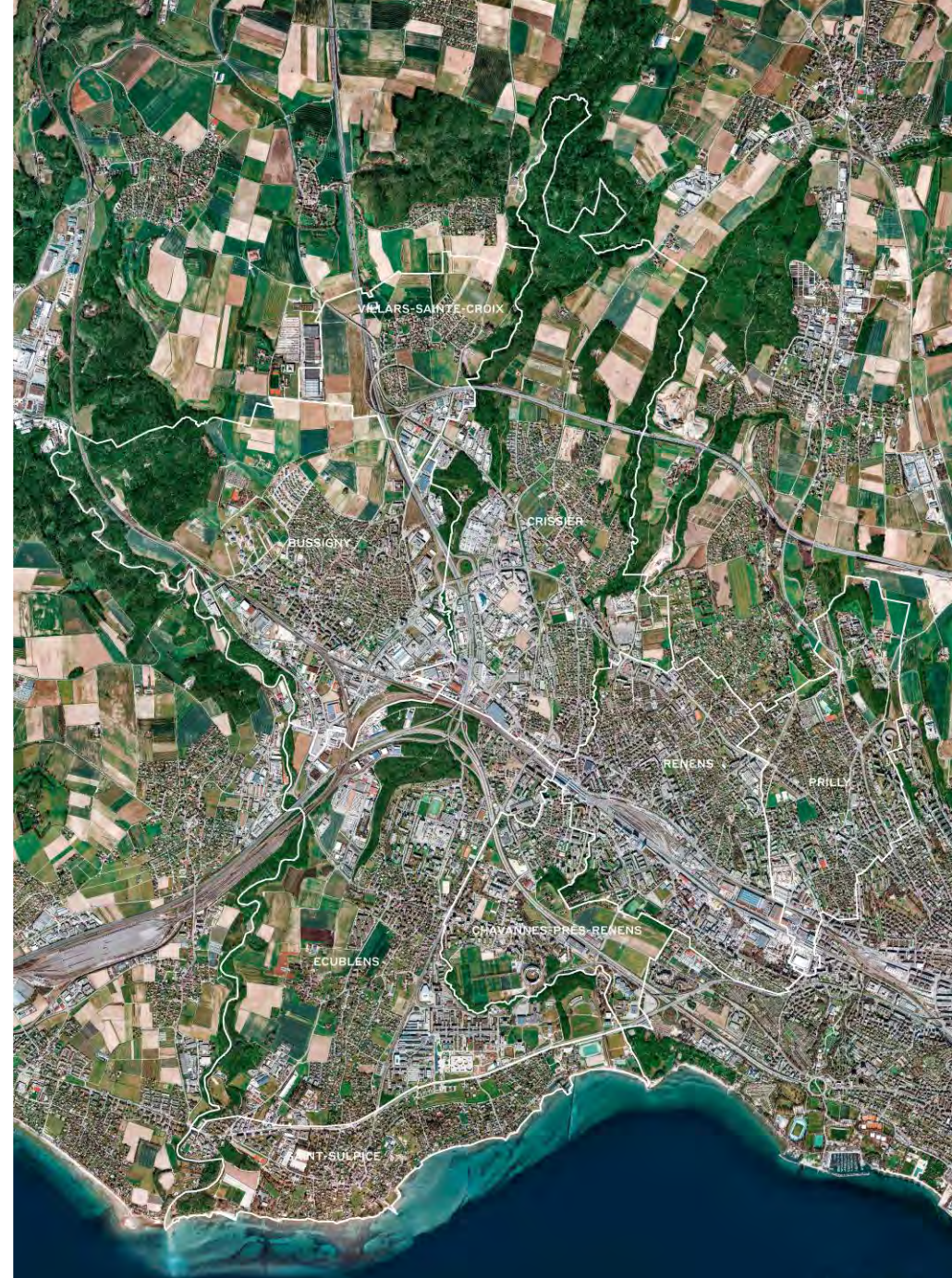
Un territoire
d'agglomération

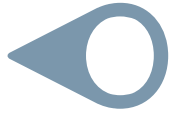
2020

80'000 habitants

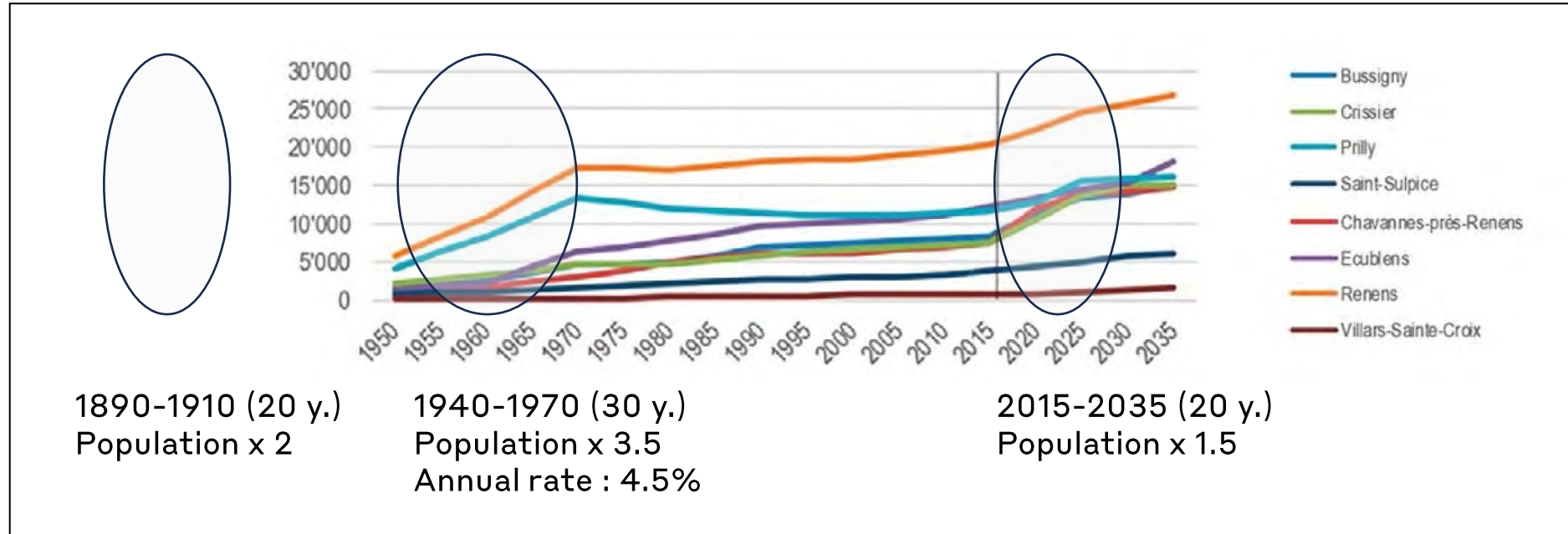
50'000 emplois

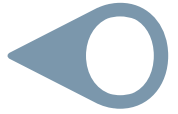
(+ 25'000 emplois
depuis 2000)





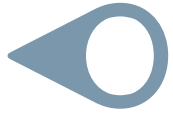
3 main growth periods



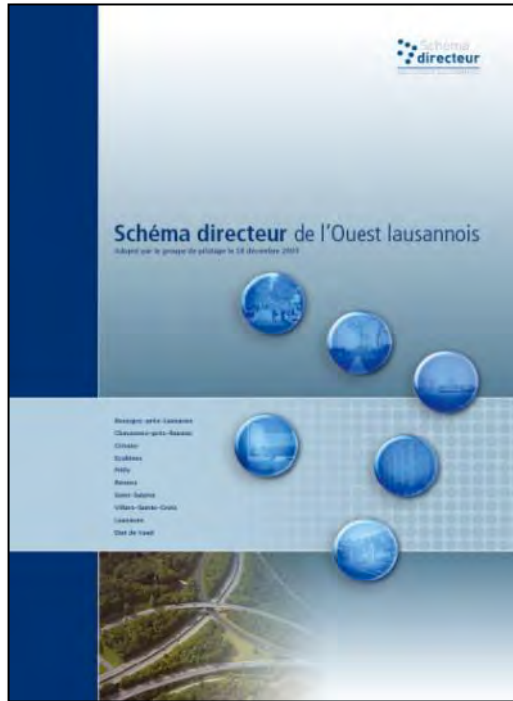


8 Communes qui travaillent ensemble depuis 2003





2021 : Plan directeur intercommunal de l'Ouest lausannois (PDi-OL)



Vision 2020

v

Bussigny
 Chavannes
 Crissier
 Ecublens
 Prilly
 Renens
 St-Sulpice
 Villars-Ste-Croix

Plan Directeur
 intercommunal
 de l'Ouest lausannois

Vision 2040



Bussigny



Chavannes-près-Renens



Crissier



Ecublens



Prilly



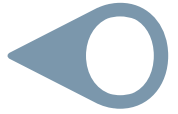
Renens



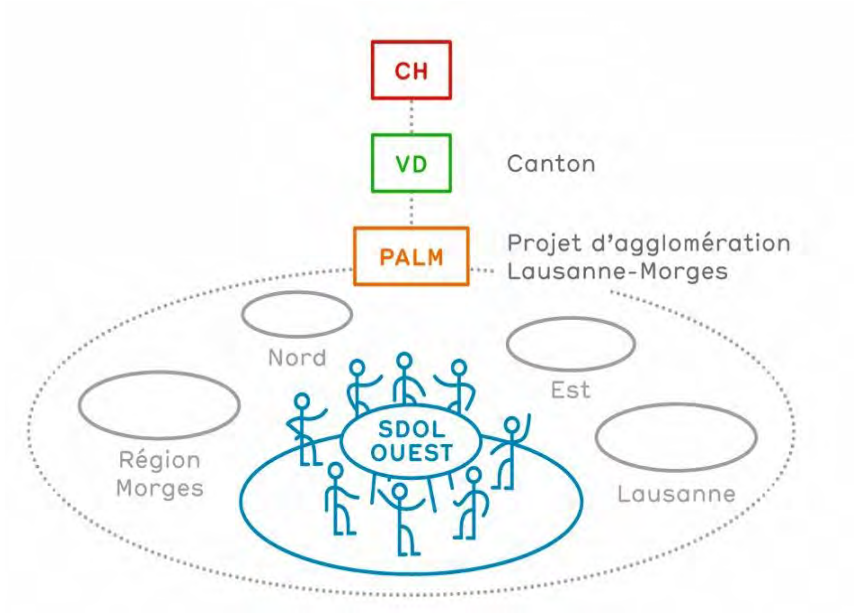
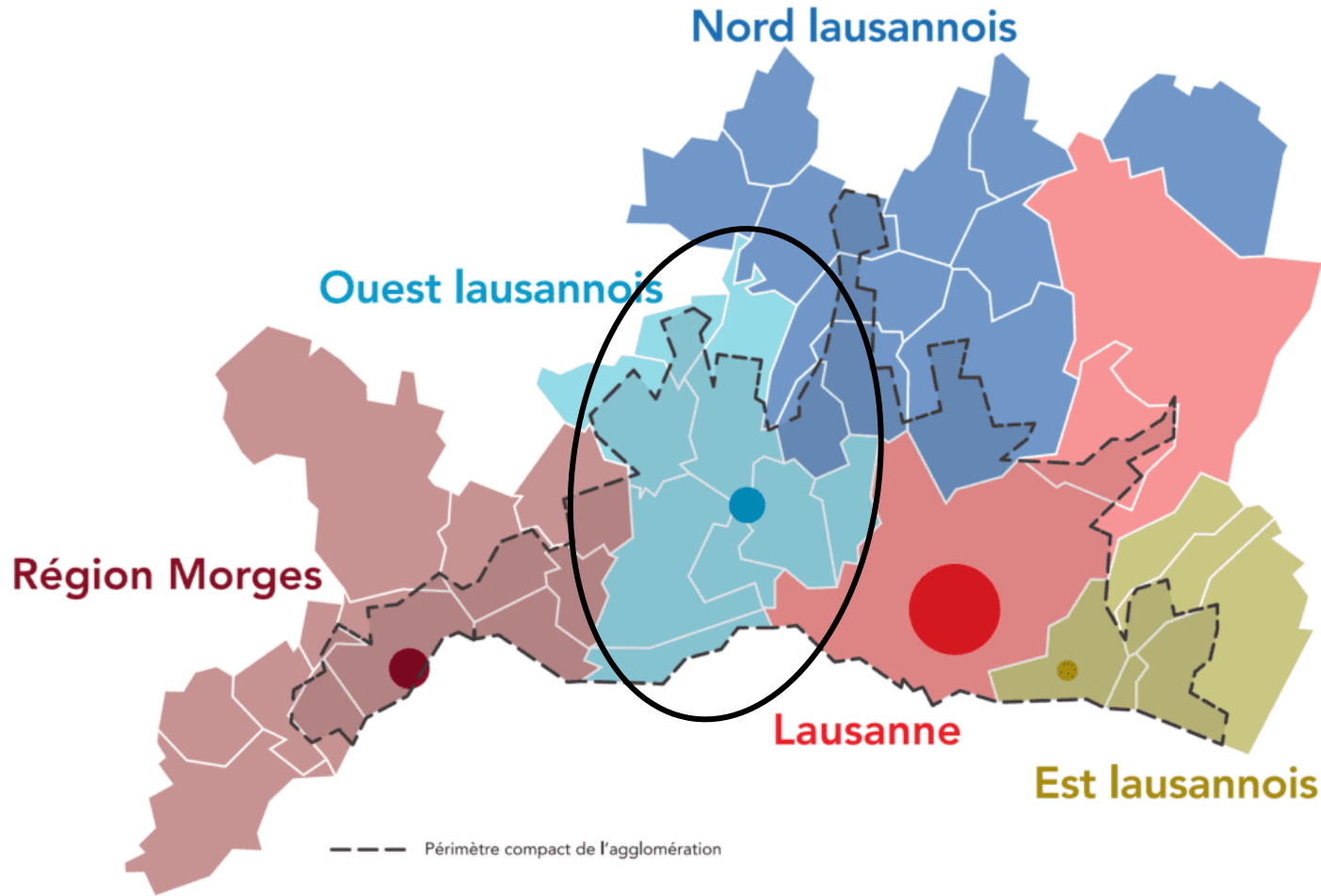
Saint-Sulpice



Villars-Sainte-Croix

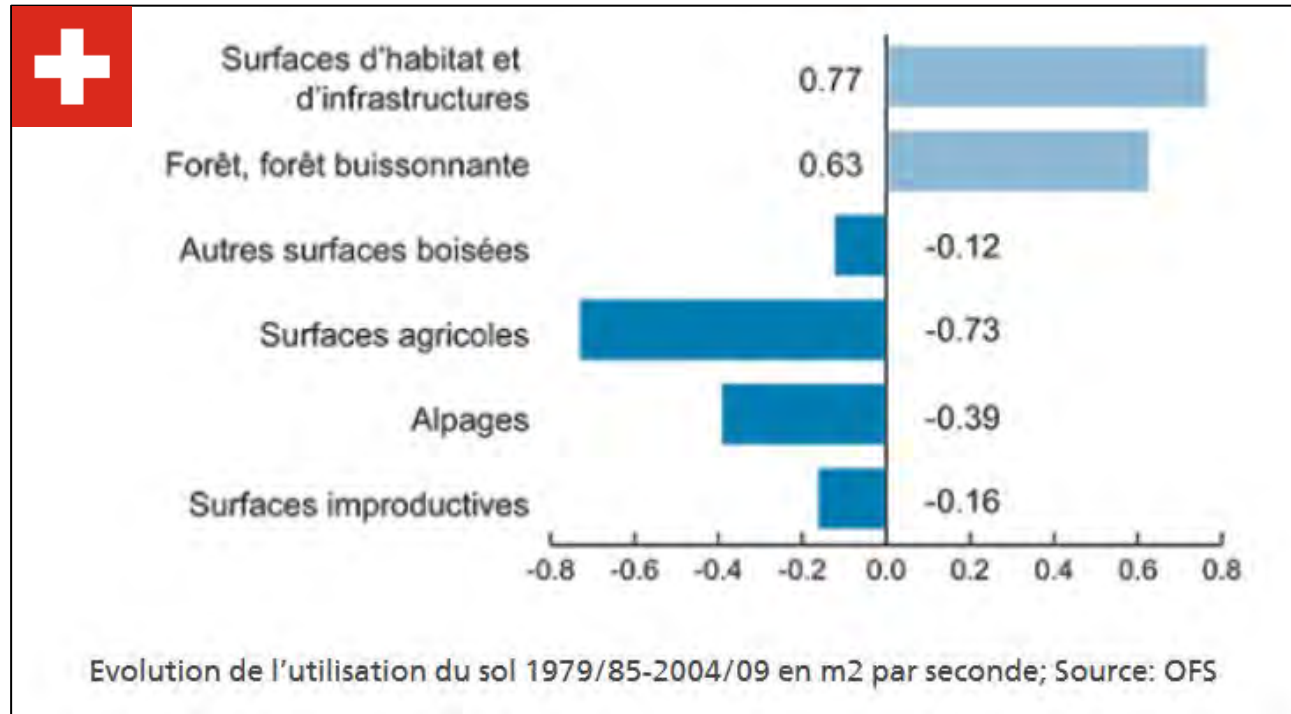


Agglomération Lausanne-Morges (PALM)



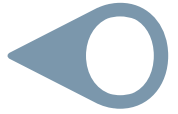


Loi fédérale sur l'aménagement du territoire (LAT), 2013

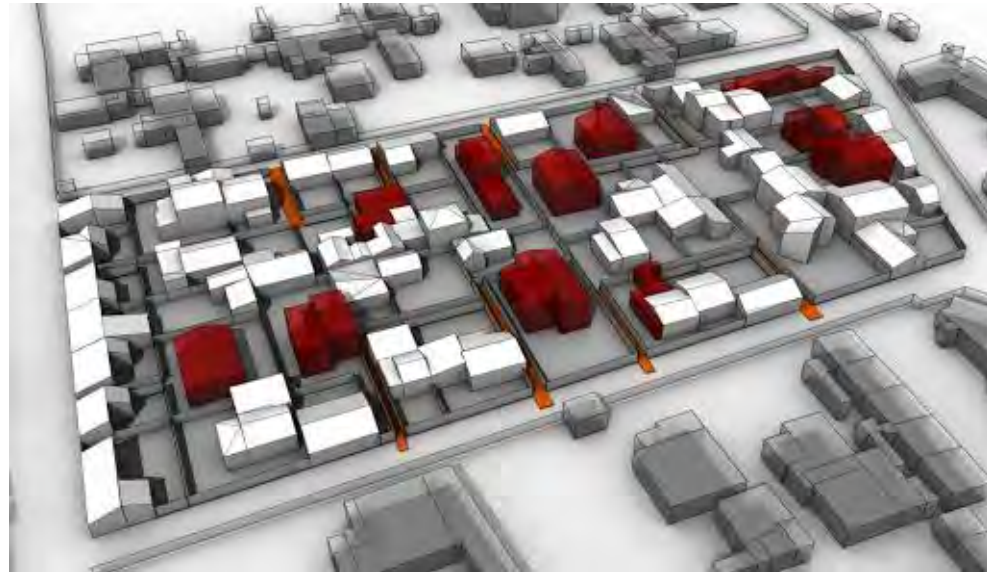
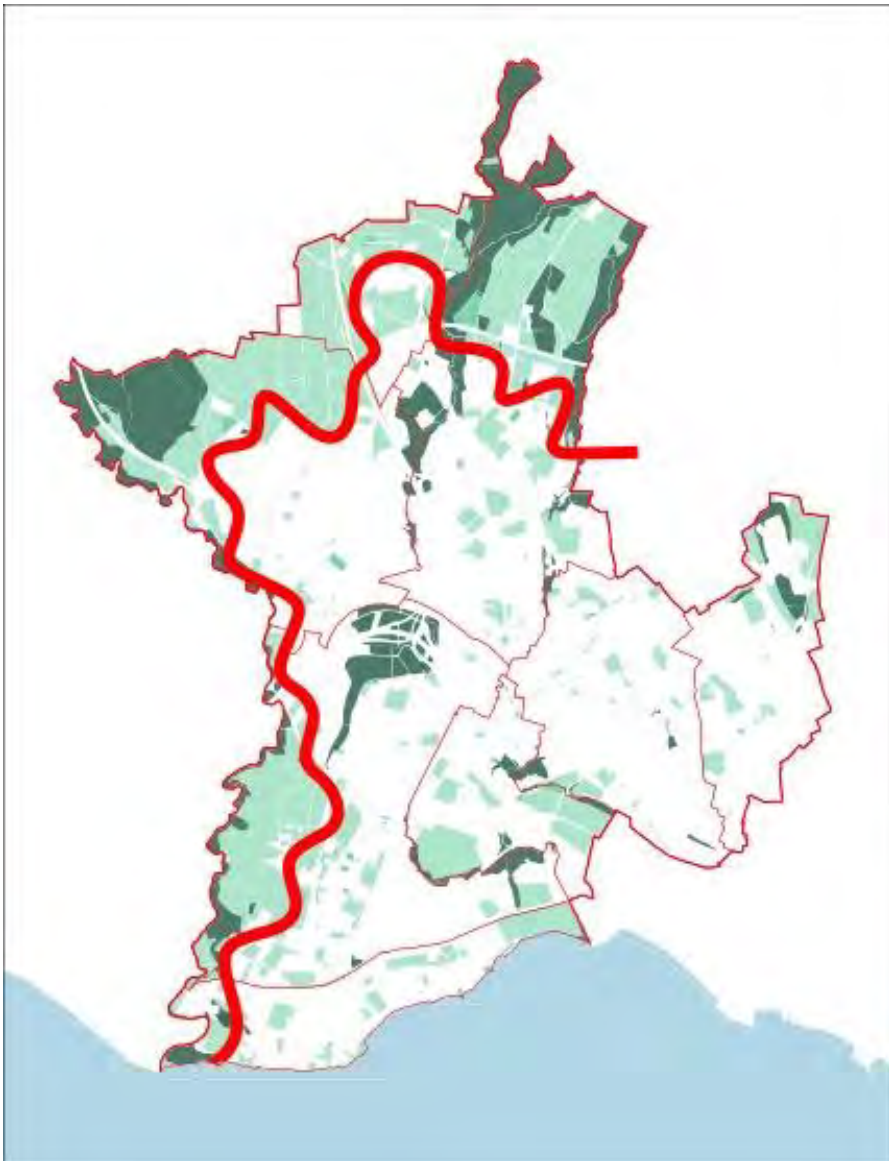


Buts de la LAT : «orienter le développement de l'urbanisation vers l'intérieur du milieu bâti»

- **Un frein au mitage du territoire**
- **Une remise à plat de l'aménagement du territoire en Suisse**

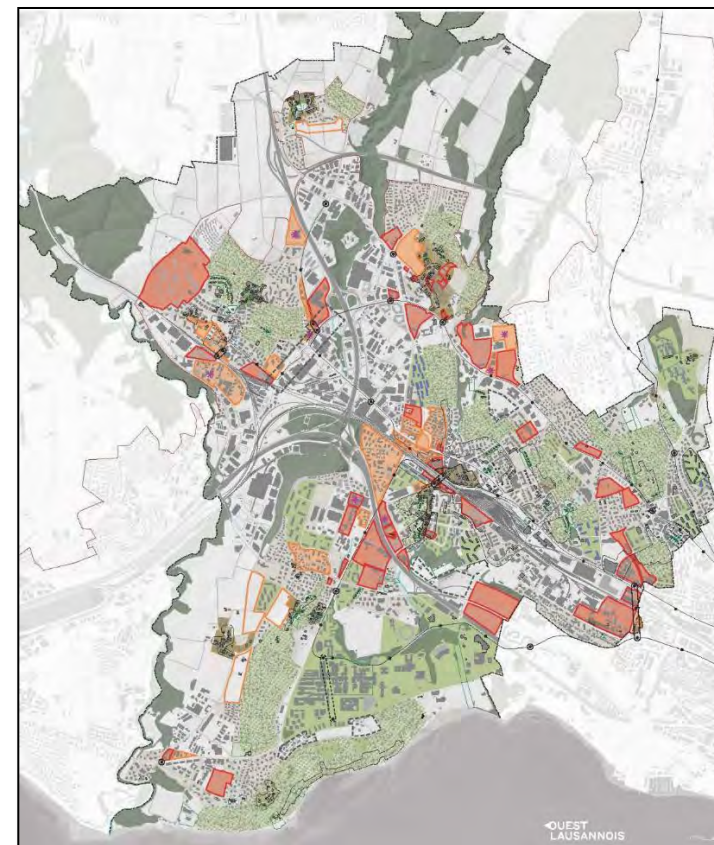


Croissance + limite à l'urbanisation = densification

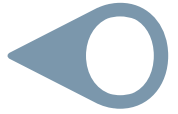


v



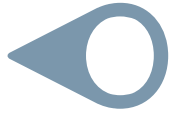


Densification ciblée

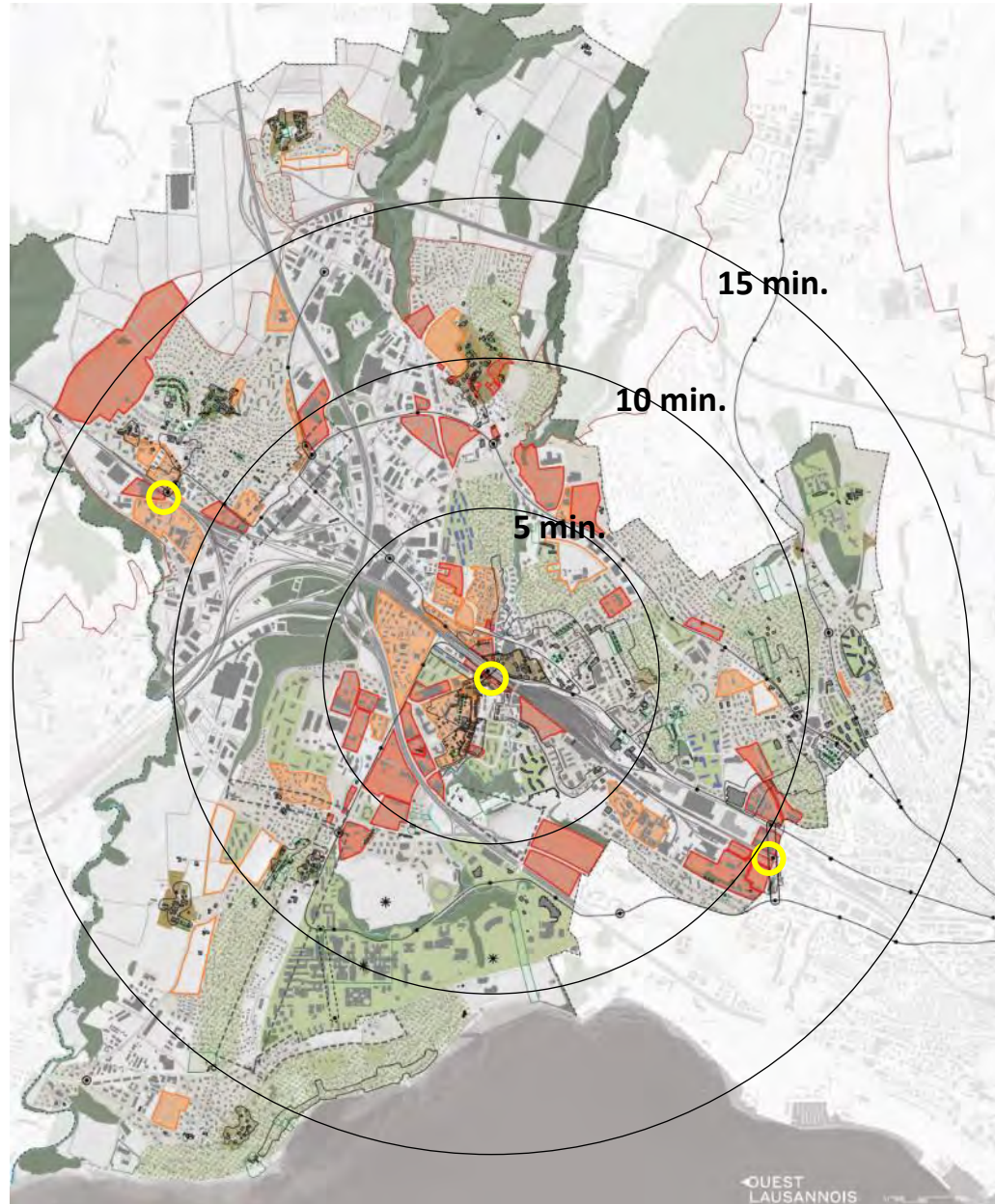


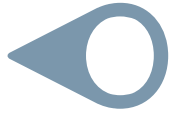
Bâtiments d'activités en projet



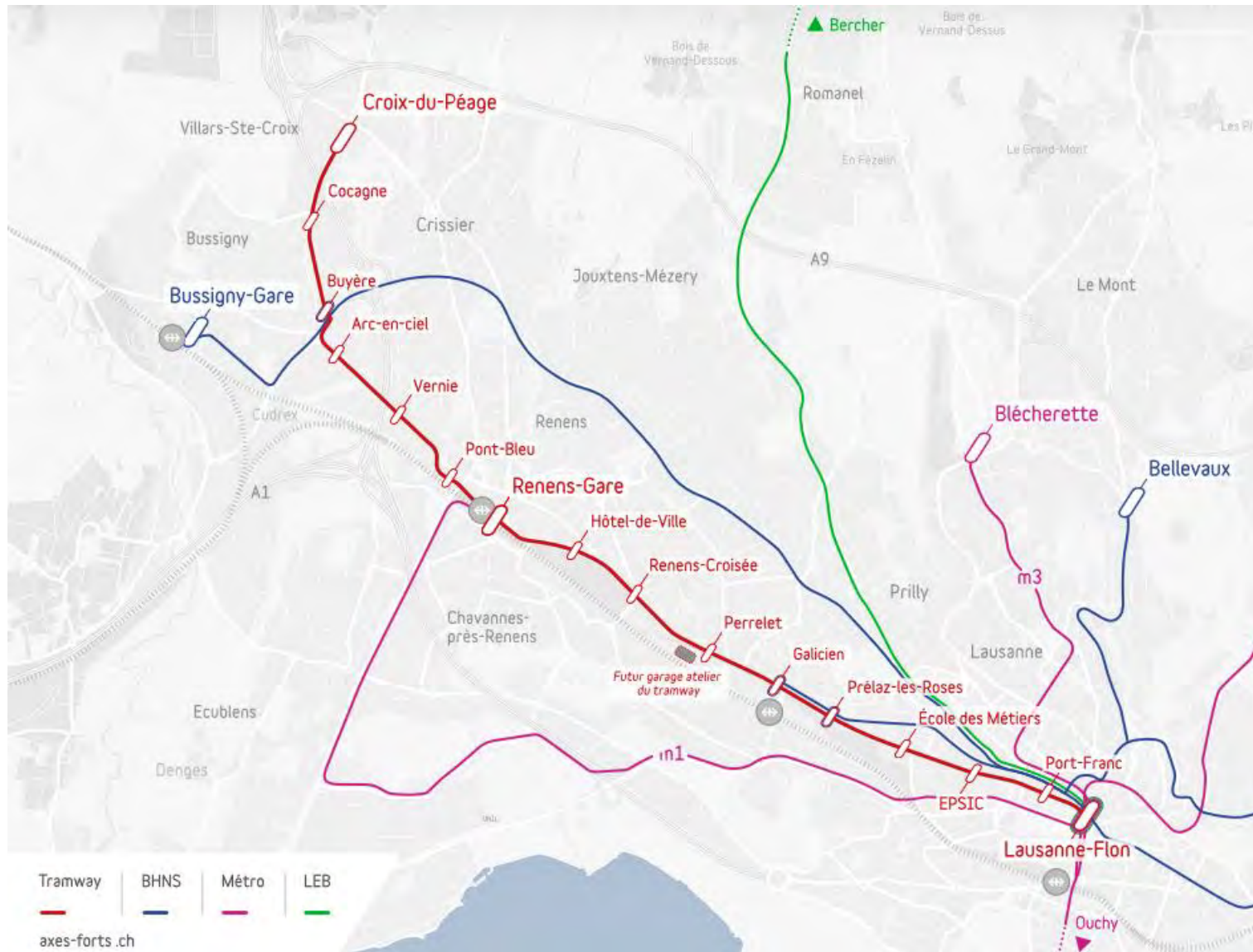


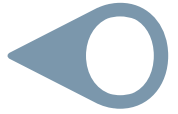
Ville des courtes distances



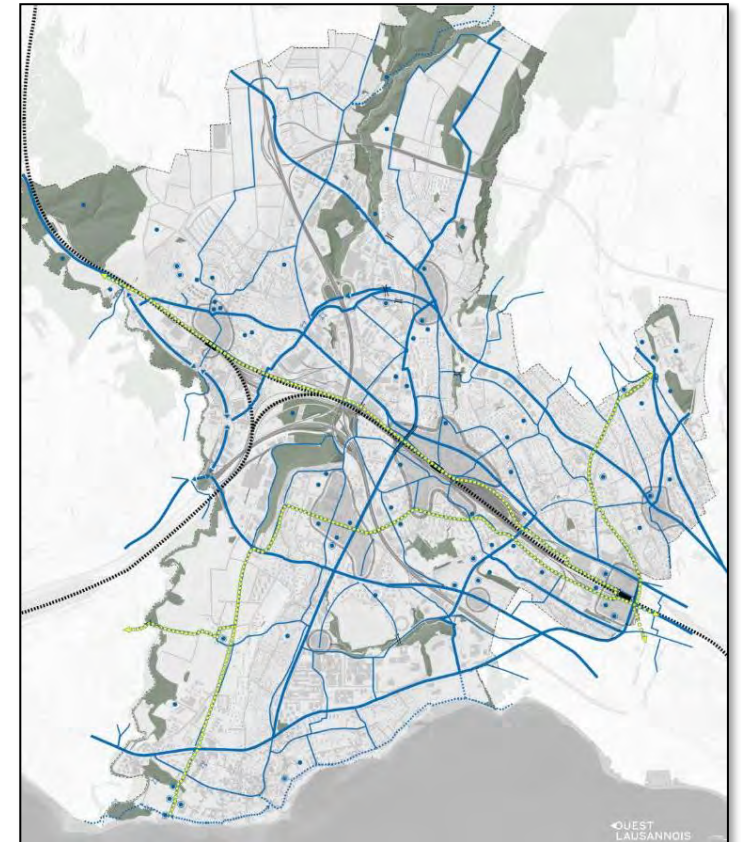


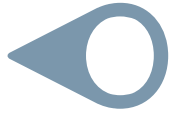
Développement des transports publics



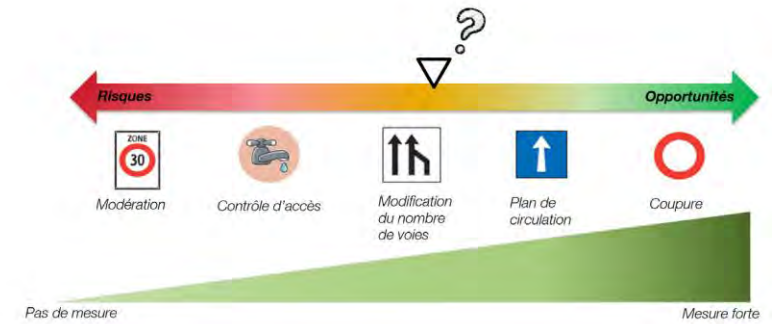


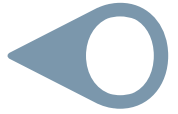
Développement des infrastructures pour la mobilité active





Réseau routier modéré et tranquilisé

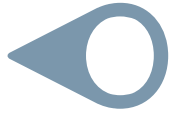




Encouragement à l'assainissement du parc bâti résidentiel

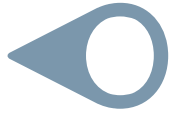


OUEST
RÉNOVE

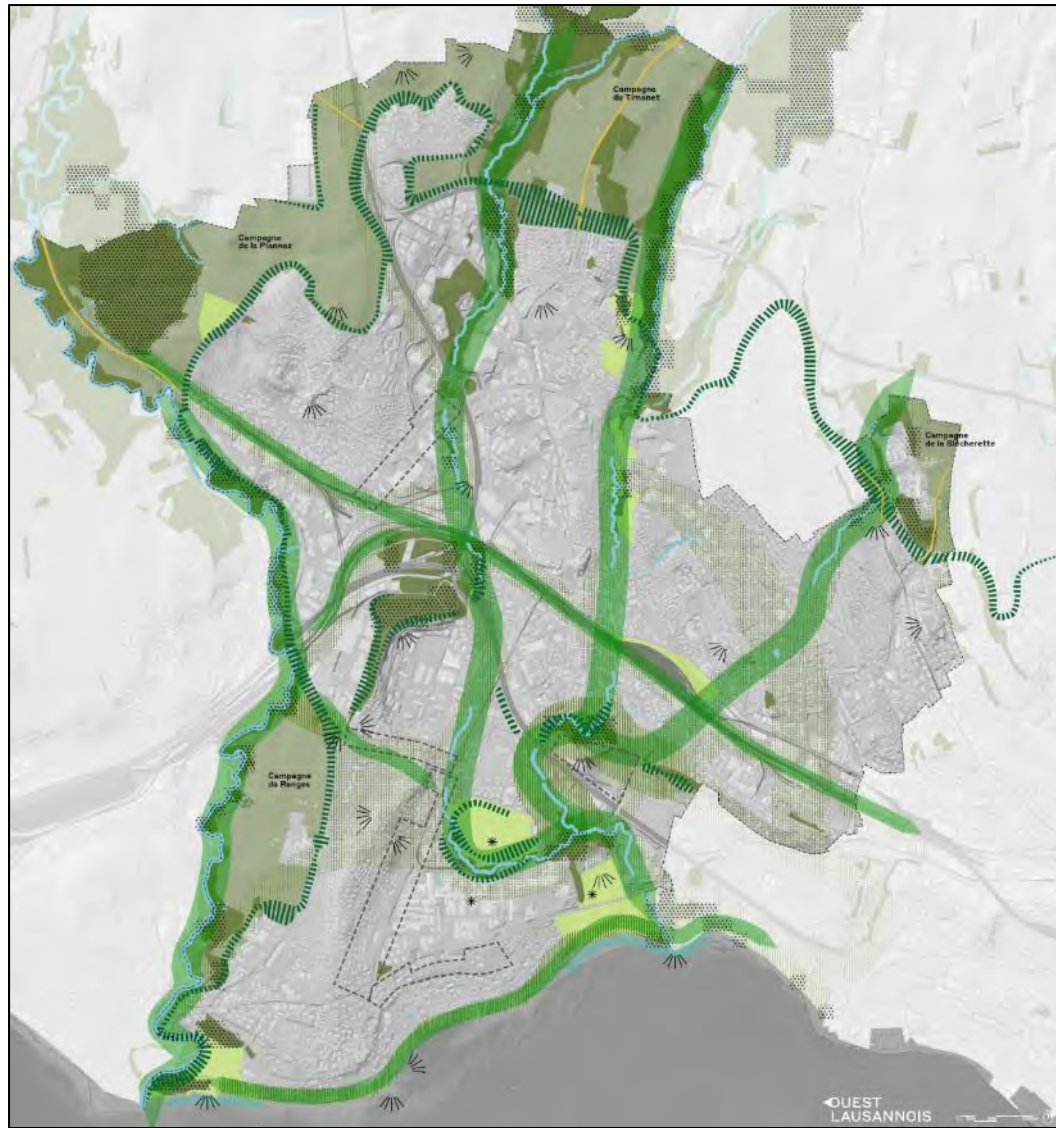


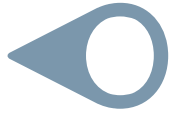
Secteurs calmes avec préservation et valorisation des qualités existantes



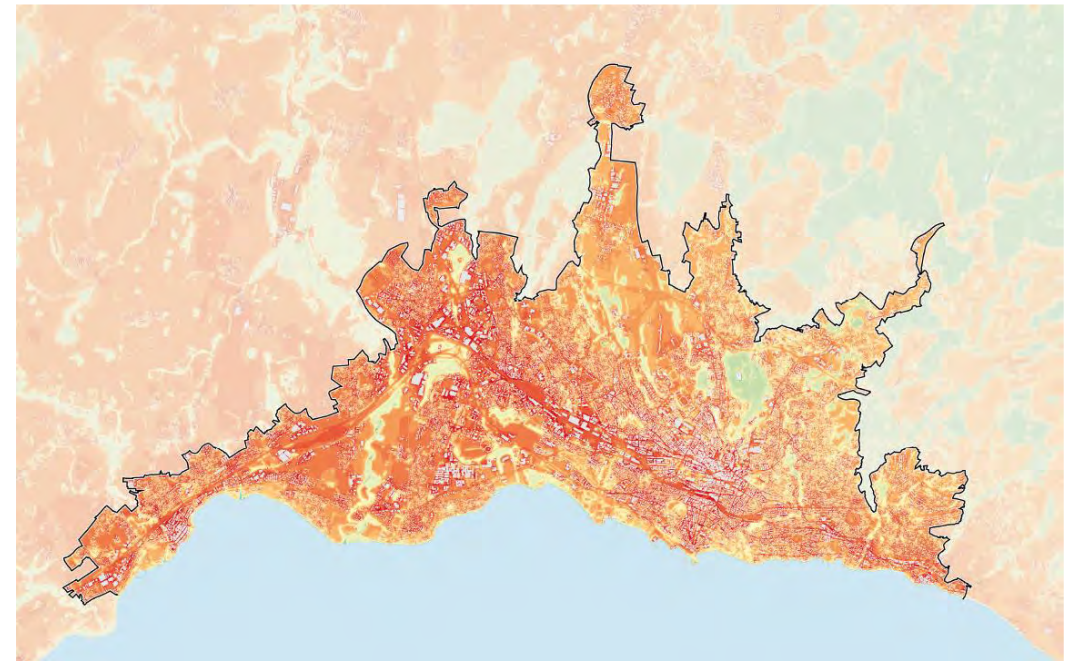
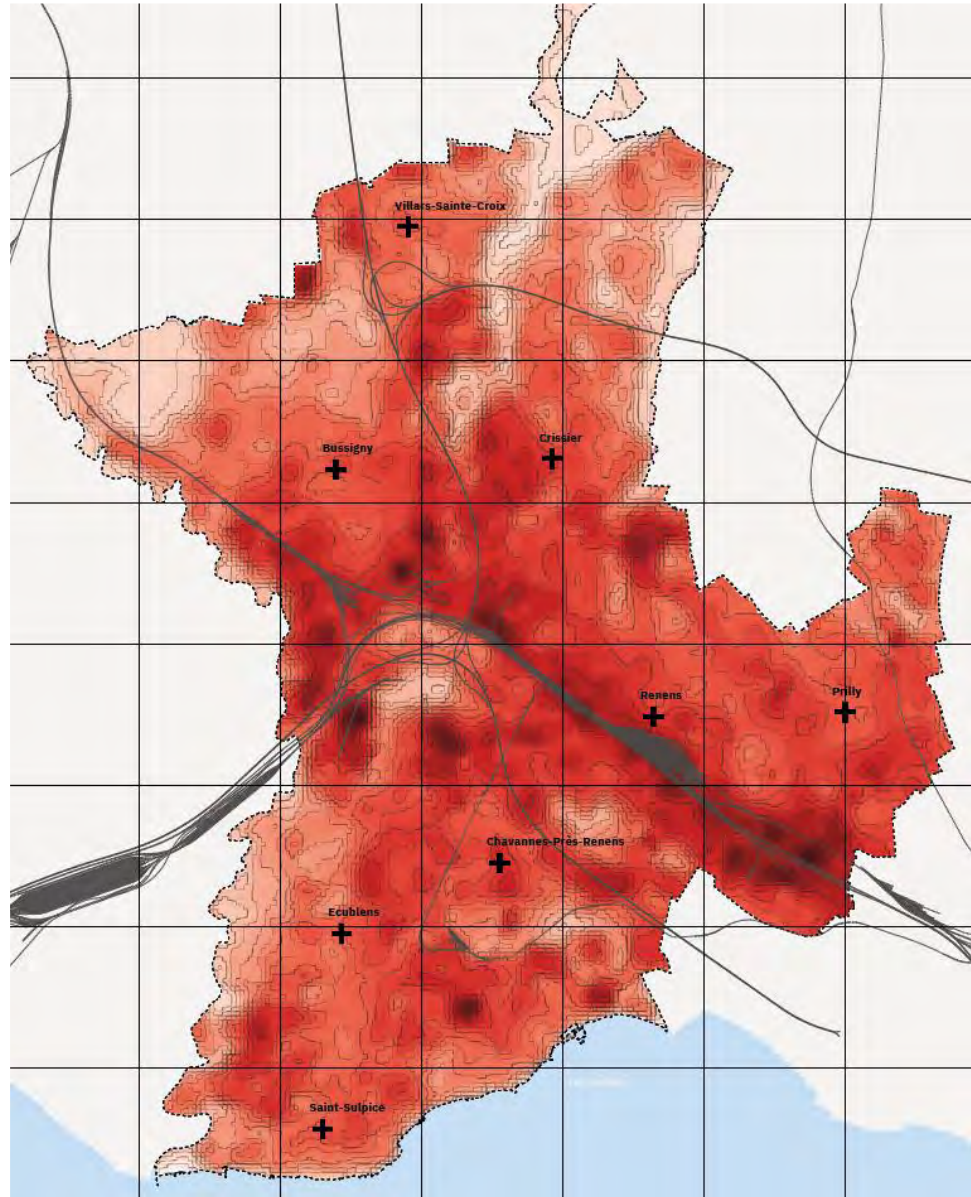


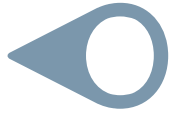
Renforcer le maillage d'espaces verts et d'espaces publics



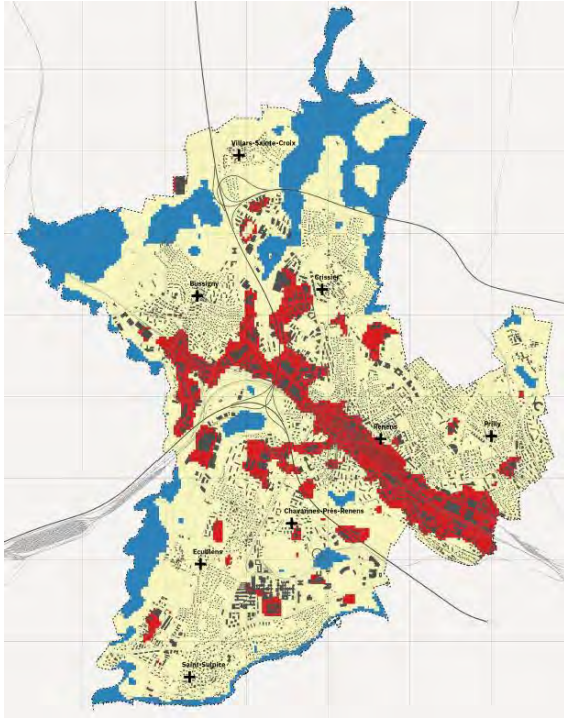


Ilots de chaleur (agglomération lausannoise)

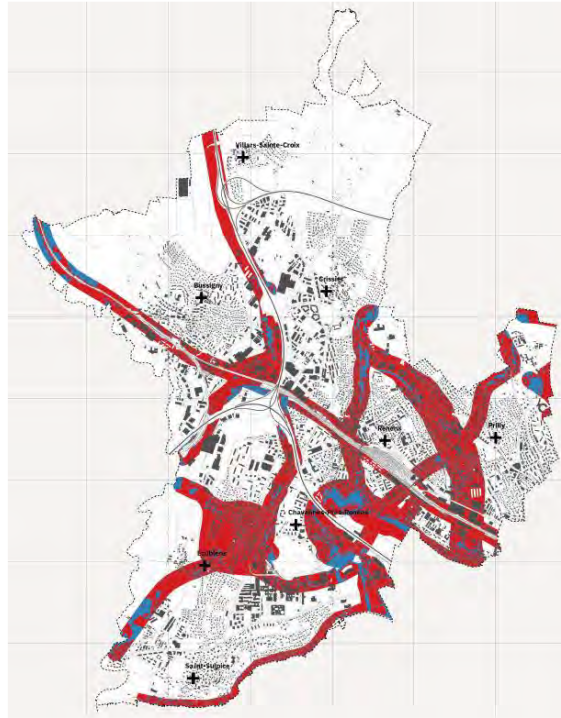




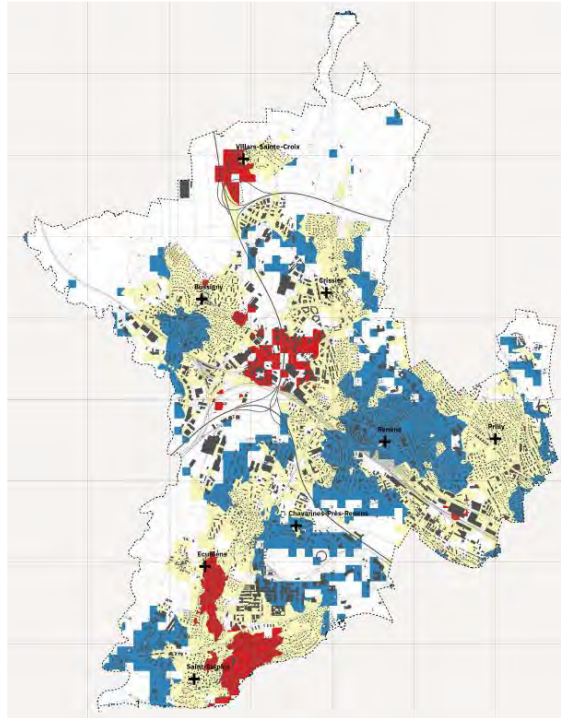
Services écosystémiques des arbres



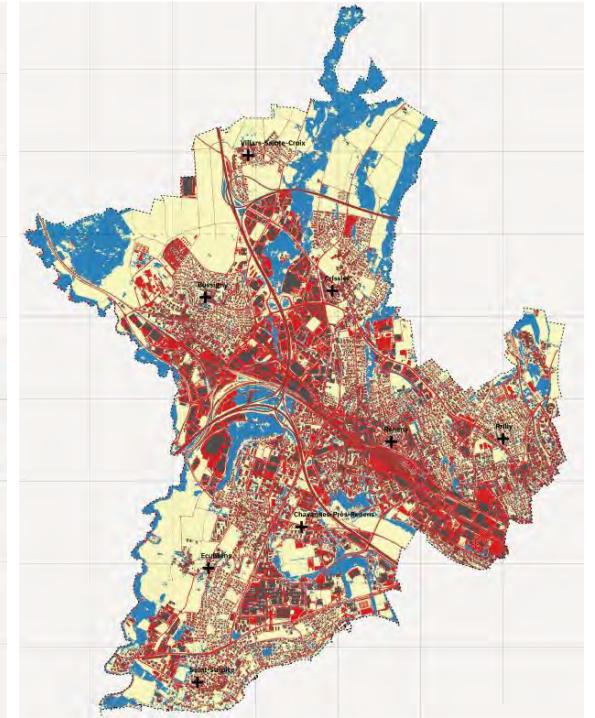
Lutte contre les îlots de chaleur



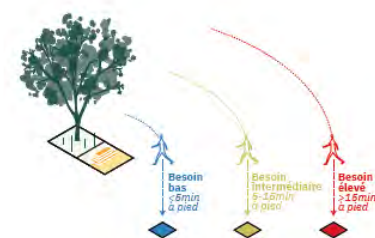
Renforcement des corridors écologiques

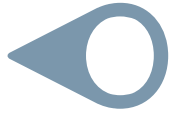


Proximité à un espace boisé



Lutte contre les inondations (imperméabilisation du sol)





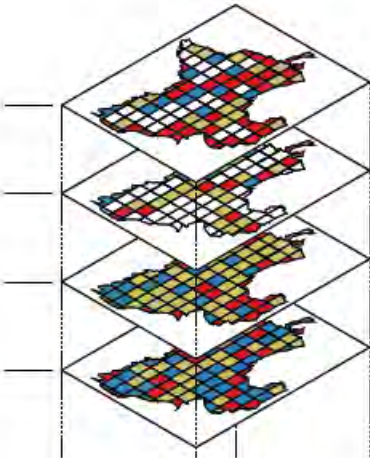
Besoins en arbres (priorités)

Rafraîchissement de la ville

Continuité de corridors biologiques

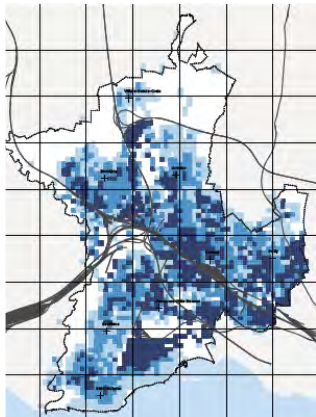
Accessibilité aux espaces publics boisés ou arborés

Régulation du phénomène d'inondation

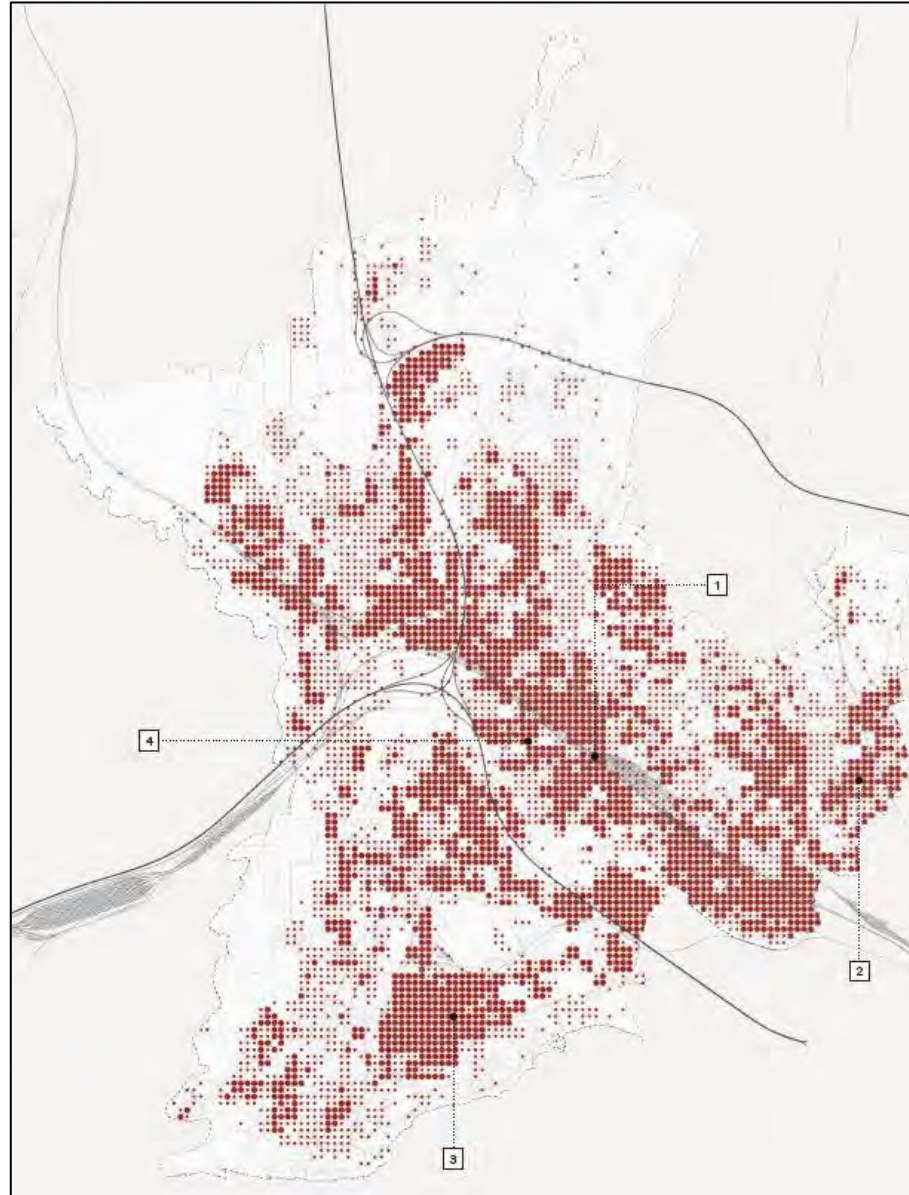


=

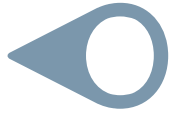
+



Densité humaine future



- Priorité d'intervention intermédiaire
- Priorité d'intervention élevée



Broye-Chamberonne : protection contre les crues et promotion de la biodiversité

