

# Jess™ : high throughput capillary western

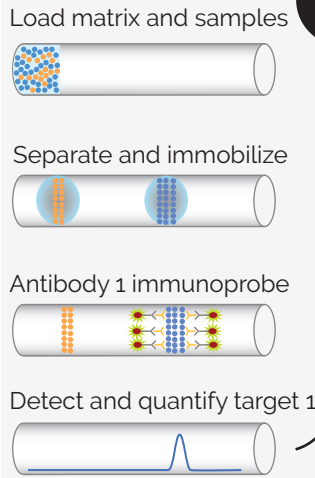
All steps of traditional western blotting are fully automated inside capillaries



- 12 or 24 independent samples/run
- Different antibodies in the same run
- 72 samples in 24h on one or more targets
- Separation
  - 2-44 kDa
  - 12-230 kDa
  - 66-440 kDa

## Regular run

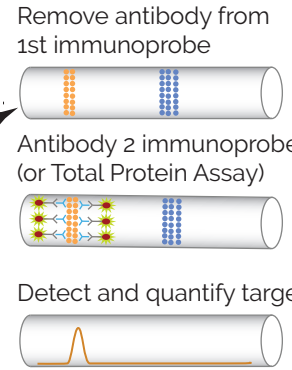
3h



## RePlex run

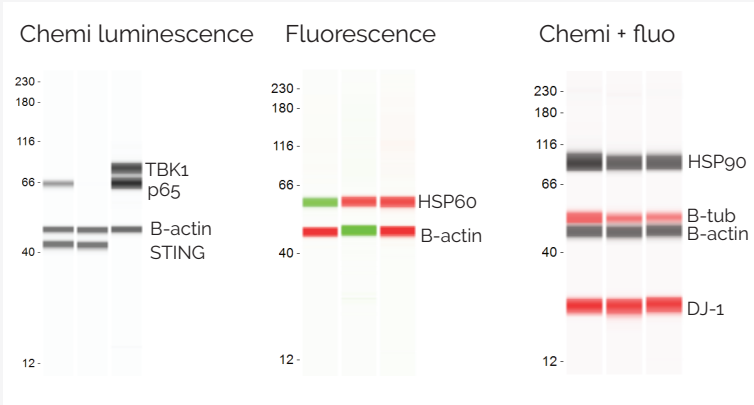
5h30

If desired, a second run could be performed within the same capillary.



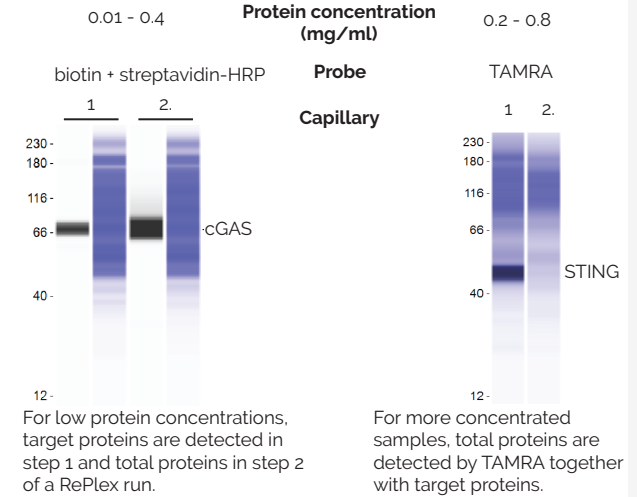
Adapted from ProteinSimple

## 3 detection modes for multiplexing



## Total protein normalisation

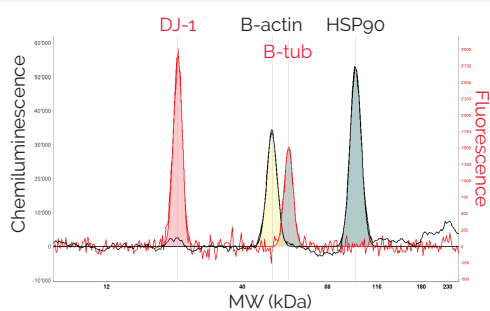
More reliably than housekeeping proteins, data can be normalized to total proteins loaded into the capillary.



## Accurate quantification

Area under the curve for precise and relative quantification.

Intra-run CV <10%  
Inter-run CV < 20%



## How to proceed

- 1 Discussion**  
Background, samples, antibodies
- 2 Test run**  
• 15 µg protein  
• 5 µl antibody  
→ Linear range  
Antibodies saturating conditions  
Multiplexing  
Normalisation
- 3 Run (s)**  
Raw file  
Analysis

**Western blot** vs **Jess**

- Fast
- Flexible
- Accurate
- Quantitative
- Reproducible
- Less material and antibodies